



The Weed Patch



Helping make your House a Home

We've got 1500 square feet of Country, Primitive, and Folk Art style gifts and home decorations to help "Make Your House a Home."

Giving Thanks Hopelink Benefit Event

November 17, 18 :: 10am - 8pm (other shops 'til 6pm)

November 19 :: 10am - 6pm (other shops 11am 'til 5pm)

Come help The Patch raise money for Hopelink!

Many Country Village Shops truly believe in making a difference in our communities. This Thanksgiving, please join us in helping make a difference to families here in Bothell.

We're proud to host a benefit event for Hopelink here at Country Village.

There are so many families that need our help this holiday season, even here in our local communities. Since 1971, Hopelink has served homeless and low income families, children, seniors and people with disabilities. Hopelink's mission is to promote self-sufficiency for all members of our community; they help people make lasting change. Many shops here at Country Village are excited to support Hopelink this holiday season.

There will be donation stations spread throughout Country Village during the weekend of November 17 - 19th. There's a variety of ways to contribute, from a simple donation to coming in and shopping!

More Info on Hopelink : www.hope-link.org

PARTICIPATING SHOPS & THEIR CONTRIBUTIONS

Chapter's Photography

Session fees (100%) ALL WEEK

November 12 - 19, 2006

Donation Station :: Food & Money

Town Hall Antique Mall

Weekend Sales (10%)

Pacific Nights

Victorian Jar Candle Sales (\$1 / per)

Peanut Butter & Lili (formerly Fancy Frocks)

Weekend Sales (5%)

Ye Olde Whitehouse Antiques & Candy Shoppe

Donation Station :: Gifts & School Supplies

The Weed Patch

Weekend Sales (10%) + Info Station

Country Cottage Wine Merchants

Do you get our newsletter, "From The Patch?"

If not, you're missing out! "From The Patch" is a professionally designed and printed publication that goes out via USPS and email 6 times a year, and is stuffed full of coupons, craft projects, home decorating ideas, tips and tricks, recipes, product information, contests, and so much more! To sign up, visit www.theweedpatchstore.com and "Join Our Newsletter!"

Not computer savvy? Come in or call the store to sign up!

COUNTRY & PRIMITIVE HOME DÉCOR ☆ FOLK ART ☆ CANDLES & ACCESSORIES

HANDMADE SOAP & BATH / BODY PRODUCTS ☆ SEASONAL GIFTS & DÉCOR ☆ LOCAL CRAFTS

GLAD CORN, KILLIAN KORN, PELICAN BAY MIXES & OTHER UNIQUE FOOD ITEMS ☆ QUILTS & LINENS

CARDS, STATIONARY & GIFT WRAP ☆ WILLOW TREE FIGURINES ☆ POTTERY & WOODEN-WARE

LAMPS & SUPPLIES ☆ LOCALLY HANDCRAFTED FURNITURE ☆ PHOTOS, SIGNS, & WALL ART

CROW, APPLE & CHICKEN THEMES ☆ STARS, STARS, & MORE STARS ☆ PLANTS & GARDEN

WE'VE GOT SO MUCH TO LOOK AT AND ENJOY WE CAN'T EVEN LIST IT ALL HERE!

Located in Bothell's Country Village

Hours of The Patch:

Sunday - Wednesday: 10am - 6pm

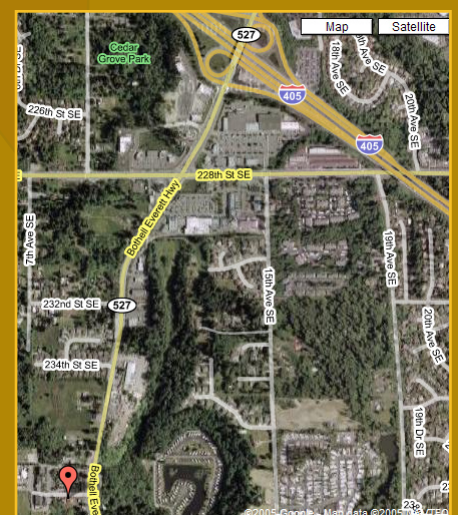
Thursday - Saturday: 10am - 8pm

814 238th St SE, Suite A - Bothell, WA 98021 - (425) 481-5995

Visit us online at www.theweedpatchstore.com

Bring this coupon in to the store and receive 10% off your purchase!

One coupon per customer. Not valid with any other offer. Must present coupon at time of purchase. Expires November 30, 2006.



Exit 26 off of I-405

Northbound I-405, turn left at top of exit.
Southbound I-405, turn right at top of exit.
Country Village is one mile up on the right.